

REVIEW

Open Access

# New insights into mechanisms behind miscarriage

Elisabeth Clare Larsen<sup>1</sup>, Ole Bjarne Christiansen<sup>1</sup>, Astrid Marie Kolte<sup>1</sup> and Nick Macklon<sup>1,2,3,4,5\*</sup>

## Abstract

Sporadic miscarriage is the most common complication of early pregnancy. Two or three consecutive pregnancy losses is a less common phenomenon, and this is considered a distinct disease entity. Sporadic miscarriages are considered to primarily represent failure of abnormal embryos to progress to viability. Recurrent miscarriage is thought to have multiple etiologies, including parental chromosomal anomalies, maternal thrombophilic disorders, immune dysfunction and various endocrine disturbances. However, none of these conditions is specific to recurrent miscarriage or always associated with repeated early pregnancy loss. In recent years, new theories about the mechanisms behind sporadic and recurrent miscarriage have emerged. Epidemiological and genetic studies suggest a multifactorial background where immunological dysregulation in pregnancy may play a role, as well as lifestyle factors and changes in sperm DNA integrity. Recent experimental evidence has led to the concept that the decidualized endometrium acts as biosensor of embryo quality, which if disrupted, may lead to implantation of embryos destined to miscarry. These new insights into the mechanisms behind miscarriage offer the prospect of novel effective interventions that may prevent this distressing condition.

**Keywords:** Embryo Selection, Epidemiology, Genetics, Immunology, Miscarriage, Recurrent Miscarriage, Sperm DNA Integrity

## Introduction

The term 'miscarriage' is applied to many complications of early pregnancy, and it is important to be clear on terminology. In 2005, the European Society of Human Reproduction and Embryology (ESHRE) introduced a revised terminology regarding early pregnancy events [1]. A pregnancy loss that occurs after a positive urinary human chorionic gonadotropin (hCG) or a raised serum  $\beta$ -hCG but before ultrasound or histological verification is defined as a 'biochemical loss'. In general, these occur before 6 weeks of gestation. The term clinical miscarriage is used when ultrasound examination or histological evidence has confirmed that an intrauterine pregnancy has existed. Clinical miscarriages may be subdivided into early clinical pregnancy losses (before gestational week 12) and late clinical pregnancy losses (gestational weeks 12 to 21). There is no consensus on the number of pregnancy losses needed to fulfill the criteria for recurrent miscarriage (RM), but ESHRE guidelines define RM as

three or more consecutive pregnancy losses before 22 weeks of gestation [2]. Although the above-mentioned terminology is widely used, it is also acknowledged that it is not always clinically useful. Indeed, a recent paper has proposed classification according to developmental periods in gestation [3].

Clinical miscarriage is both a common and distressing complication of early pregnancy. In recent years, progress in the fields of cytogenetics and immunogenetics and a greater understanding of implantation and maternal-embryo interactions has offered new insights into the possible causes of this condition, and opened up new avenues for research into its prevention and treatment. In this article we review the key mechanisms thought to underlie miscarriage, and discuss emerging concepts in this field (Table 1).

## Epidemiology of sporadic and recurrent miscarriage

Human reproduction is characterized by its inefficiency. Prospective cohort studies using sensitive and specific daily urinary hCG assays in women trying to conceive have demonstrated that only around one-third of conceptions progress to a live birth [34-36]. An estimated 30% of human conceptions are lost prior to implantation and a

\* Correspondence: n.s.macklon@southampton.ac.uk

<sup>1</sup>The Fertility Clinic, Juliane Marie Centre, Rigshospitalet, University of Copenhagen, Copenhagen, Denmark

<sup>2</sup>Department of Obstetrics and Gynaecology, Aalborg Hospital, Aalborg, Denmark

Full list of author information is available at the end of the article

**Table 1 Overview of miscarriage-associated factors and their possible causal role for miscarriage/recurrent miscarriage, possible treatments and proposals for future research**

Biomarker/lifestyle factor in patients with miscarriage/recurrent miscarriage	Documentation for causality	Possible treatment and its documented effect	Future research
Parental chromosome abnormalities [4,5]	Strong	PGD: weak	Identification of high risk carriers through clinical history; RCT of PGD/no PGD
Autoantibodies [6,7]	Moderate	Prednisone, Ivlg: weak	RCTs of prednisone and/or Ivlg
NK cell dysfunction [8-10]	Weak to moderate	Prednisone, Ivlg: weak	Develop standardized methods of measuring NK cells in the endometrium; establish normal values of NK cells in the blood and endometrium during pregnancy
Abnormal HLA-G expression [11]	Weak to moderate	Prednisone, Ivlg: weak	Develop standardized methods for measuring soluble and membrane-bound HLA-G
Hereditary thrombophilia [12,13]	Moderate	Heparin, LDA: weak	RCTs of heparin and LDA
Acquired thrombophilia [12,14]	Strong	Heparin, LDA: moderate	Larger RCTs of heparin and LDA
Thyroid autoimmunity [15-17]	Strong	Levothyroxine: weak	RCTs of levothyroxin
PCOS [18]	Weak	Weight loss	Cohort studies of miscarriage rates subsequent to weight loss vs no weight loss
Sperm DNA fragmentation [19,20]	Moderate	Sperm separation: no	Identify the most specific assays; establish methods for efficient sperm selection.
Disrupted endometrial selection [21-26]	Recently proposed mechanism	Correction of decidual selective phenotype by hormonal modulators, including progesterone.	Intervention studies using hormonal treatments in the early luteal phase are being carried out
Uterine malformations [27,28]	Weak to moderate	Septal resection	RCTs of septal resection/no resection
hCG gene polymorphisms [29,30]	Weak to moderate	hCG supplementation: weak	RCTs of hCG supplementation
Alcohol consumption [31]	Moderate	Alcohol cessation	NA
Obesity [32,33]	Weak to moderate	Weight loss: weak	Cohort studies of miscarriage rates subsequent to weight loss vs no weight loss

*hCG* human chorionic gonadotropin, *HLA* human leukocyte antigen, *Ivlg* intravenous immunoglobulin, *LDA* low-dose aspirin, *NK* natural killer, *PCOS* polycystic ovary syndrome, *PGD* preimplantation genetic diagnosis, *RCT* randomized controlled trial.

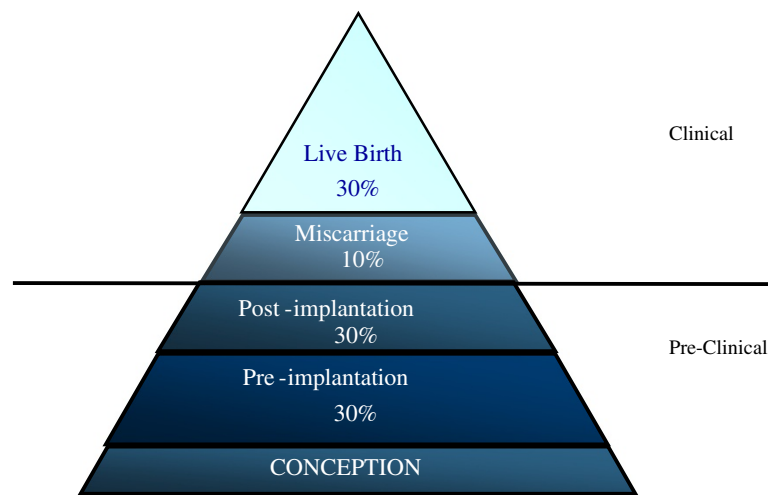
further 30% following implantation but before the missed menstrual period, that is in the third or fourth week of gestation. These are often termed preclinical losses [37] (Figure 1). Finally, the incidence of early clinical pregnancy loss is estimated to be 15% of conceptions with a significant variation according to age. Thus, the incidence ranges from 10% in women aged 20 to 24 years to 51% in women aged 40 to 44 years [38]. Late losses between 12 and 22 weeks occur less frequently and constitute around 4% of pregnancy outcomes [39].

Compared to sporadic miscarriage the prevalence of RM is considerably lower irrespective of whether biochemical losses are included or not. If only clinical miscarriages are included the prevalence is 0.8% to 1.4% [40]. If, however, biochemical losses are included the prevalence is estimated to be as high as 2% to 3%. Since the incidence of RM is greater than would be predicted by chance, it is considered to represent a

disease entity defined by a series of events, with a number of possible etiologies [41].

#### Mechanisms and reasons for 'physiological' early pregnancy loss

It is a generally accepted assumption that sporadic pregnancy losses occurring before an embryo has developed represent a 'physiological' phenomenon, which prevents conceptions affected by serious structural malformations or chromosomal aberrations incompatible with life from progressing to viability. This concept is supported by clinical studies in which embryoscopy was used to assess fetal morphology prior to removal by uterine evacuation. Fetal malformations were observed in 85% of cases presenting with early clinical miscarriage [42]. The same study also demonstrated that 75% of the fetuses had an abnormal karyotype. Fetal chromosomal aneuploidies arising from non-inherited and non-disjunctional events



**Figure 1 The pregnancy loss iceberg: an overview of the outcome of spontaneous human conceptions.** It is estimated that 70% of conceptions are lost prior to live birth. The majority of these losses occur prior to implantation or before the missed menstrual period, and since they are not revealed to the woman they are termed preclinical. In the pregnancy loss 'iceberg', they are therefore below the 'waterline'. Figure reproduced with permission from Oxford University Press [37].

are common. Indeed, in a recent study using comparative genomic hybridization to study the chromosomal complement of all blastomeres in preimplantation human embryos, more than 90% were found to have at least one chromosomal abnormality in one or more cells [43]. The clinical implications of minor, mosaic and possibly 'transient' aneuploidies remain unclear. However, while most fetuses with severe developmental defects will die *in utero* [44] some aneuploidies can be compatible with survival to term. The most commonly encountered is trisomy 21, although 80% of affected embryos perish *in utero* or in the neonatal period [45]. In most cases, the extra chromosome is of maternal origin and caused by a malsegregation event in the first meiotic division. The risk of this increases with maternal age and may be considered to be a biological rather than pathological phenomenon.

Although fetal chromosomal aberrations may be identified in 29% to 60% of cases in women with RM, the incidence decreases as the number of miscarriages increases suggesting other mechanisms as a cause of the miscarriage in RM couples with multiple losses [46].

In the near future diagnostic tests on fetal genetic material isolated from maternal plasma will be a routine procedure and probably substitute chorion villus sampling and amniocentesis for prenatal diagnosis of fetal genetic diseases [47]. Today, cell-free fetal DNA can be isolated from the maternal circulation from 7 weeks of gestation, and numerous studies have already been published where next generation sequencing techniques have been applied to detect fetal aneuploidies in cell-free fetal DNA [48-50]. Since it will soon be possible to sequence the entire fetal genome from free fetal DNA in the maternal circulation, new insights will be achieved in relation to both

chromosomal abnormalities and single gene disorders as a cause of sporadic and recurrent miscarriage.

#### Karyotypic disorders

A chromosomal abnormality in one partner is found in 3% to 6% of RM couples, which is ten times higher than the background population [51]. The most commonly encountered abnormalities include balanced translocations and inversions that do not have any consequences for the phenotype of the carrier, but in pregnancy there is a 50% risk of a fetus with an unbalanced chromosomal abnormality that can result in a miscarriage. This risk is influenced by the size and the genetic content of the rearranged chromosomal segments. Whether or not to screen couples with RM for chromosomal abnormalities remains a topic of debate. The argument for performing this costly analysis is to optimize the counseling of RM couples with respect to any subsequent pregnancy and to avoid the birth of a child with congenital defects and mental handicaps due to an unbalanced karyotype by offering appropriate prenatal diagnostic screening.

The case against offering routine karyotyping for couples with RM rests primarily on the findings of a large index-control study with a mean follow-up period of 5.8 years. This study showed that carrier couples with at least two previous miscarriages had the same chance of having a healthy child as non-carrier couples with at least two miscarriages (83% and 84%, respectively), and more importantly a low risk (0.8%) of pregnancies with an unbalanced karyotype surviving into the second trimester [52]. Current clinical guidelines do recommend parental karyotyping as part of the evaluation in RM couples with a high risk of carrier status [4,5] but only if maternal age is

low at the second miscarriage, or if there is a history of two or more miscarriages in first degree relatives [53].

Some clinicians recommend *in vitro* fertilization with preimplantation genetic diagnosis (PGD) as a treatment option in RM couples with carrier status in order to replace euploid embryos only. This may be beneficial in couples with coexisting infertility, but in couples with proven fertility the live birth rate seems to be comparable or maybe even higher after spontaneous conception including PGD [54,55].

### Immunological and immunogenetic causes

It has long been an enigma how the implanting embryo and trophoblast escape maternal immunological rejection in the uterus in spite of carrying allogeneic proteins encoded by paternal genes. A series of mechanisms regulating maternal immune recognition and fetal antigen expression has been suggested to prevent the rejection of the majority of pregnancies, but these may cause RM when they fail.

Since reproductive success is of utmost importance for the survival of a species, it is likely that redundant mechanisms have developed to prevent immune rejection of the embryo, and only when several mechanisms fail in a woman will RM will occur. This complexity continues to feed the ongoing controversy regarding which immunological factors play a role in the pathogenesis of RM.

There is general agreement that a series of autoantibodies such as anti-phospholipid, anti-nuclear and anti-thyroid antibodies can be found with increased prevalence in RM patients and may display a negative prognostic impact. However, in humans there is no proof that the antibodies *per se* harm the pregnancy; they may simply be markers of a predisposition to disruption of immunological self-tolerance and proinflammatory responses in these women. In contrast, a study found that pregnant mice injected with human IgG from a patient with anti-phospholipid antibodies significantly increased fetal resorption rate and reduced fetal weight while simultaneous treatment with antibodies blocking activation of the complement cascade completely prevented fetal resorptions and growth retardation [6]. In this and similar studies it was also found that mice deficient in various complement factors were resistant to fetal injury induced by injection of the anti-phospholipid antibodies. This indicates that at least in mice, anti-phospholipid antibodies may exercise their harmful effect on pregnancies through immunological mechanisms (complement activation) rather than through a direct procoagulant effect. There is some, however, weaker evidence that anti-phospholipid antibodies also induce complement activation in humans with antiphospholipid syndrome [7].

A series of studies have reported that increased concentrations of proinflammatory or T helper cell type I

cytokines [56] or increased frequencies of subsets of natural killer (NK) cells in the blood [8] can be found during euploid sporadic miscarriage and in women with RM but it is debated whether measurements of these biomarkers in peripheral blood reflect conditions at the fetomaternal interface. There is some evidence that uterine NK cells regulate angiogenesis in the non-pregnant endometrium and therefore may also play a role for implantation and early pregnancy [9] but a systematic review of relevant studies did not find peripheral blood or uterine NK cell density or activity to be predictive for pregnancy outcome in patients with RM [10].

The most convincing evidence for the importance of the immune system in miscarriage and RM comes from genetic/epidemiologic studies showing that genetic biomarkers of possible importance for immunologic dysregulation in pregnancy are found with increased frequency in women with RM and display a negative impact on the prognosis. Examples of such genetic biomarkers are maternal homozygosity for a 14 base-pair insertion in the human leukocyte antigen (HLA)-G gene [11], maternal carriage of HLA class II alleles predisposing to immunity against male-specific minor histocompatibility antigens found on male embryos [57], specific maternal NK cell receptor genotypes in combination with fetal HLA-C genotypes that may be associated with aberrant maternal NK cell recognition of the trophoblast [58] and maternal mannose-binding lectin binding genotypes predisposing to low plasma levels of mannose-binding lectin, which may be of importance for release of cytokines and clearance of apoptotic trophoblast cells [59].

Proposed treatment options for RM where immunologic dysregulation is suggested to play a role include prednisone, allogeneic lymphocyte immunization, intravenous immunoglobulin infusion and injection of tumor necrosis factor  $\alpha$  (TNF $\alpha$ ) antagonists or granulocyte colony-stimulating factor (G-CSF). Much controversy exists about the efficacy of these treatments since the majority have not been subject to rigorous clinical study or have only been tested in few and small randomized controlled trials [60].

The best documented immunological treatment is intravenous immunoglobulin (IvIg), which in a recent meta-analysis in women with secondary RM was shown to improve the chance of live birth compared with placebo (OR = 1.89, 95% CI 0.93 to 3.85) [61]. However, this effect did not reach statistical significance and appropriately powered randomized controlled trials focusing on this patient subset are required to elucidate the clinical value of this therapeutic approach. In mice models there is good evidence that both unfractionated and low-molecular-weight heparin prevented complement activation and protected against pregnancy complications induced by injection of IgG from patients with

antiphospholipid syndrome emphasizing the immunological effects of heparin [62].

### **Thrombophilias**

Thrombophilic factors predisposing to thromboembolic events are associated with both sporadic miscarriages and RM and can be hereditary or acquired [12]. It is suggested that the association is caused by an increased risk of thrombus formation in the nascent placental vessels resulting in placenta infarctions. Hereditary factors include deficiency of antithrombin, protein C and protein S or carriage of the factor V Leiden or factor II (G20210A) gene mutations. Acquired factors include the presence of anti-phospholipid antibodies, lupus anticoagulant or anti-cardiolipin antibodies, which are deemed to be present when identified in repeated samples taken 3 months apart and outwith pregnancy. Hyperhomocysteinemia can be both hereditary and acquired. There is some evidence from two non-blinded randomized controlled trials that treatment with low-dose heparin and aspirin during pregnancy increases the chance of live birth in RM patients with anti-phospholipid antibodies [14]. There is no evidence that anticoagulation therapy will improve the prognosis for RM patients with hereditary thrombophilias or no thrombophilia factors at all [13], and results from relevant ongoing randomized controlled trials are awaited (for example, the ALIFE2 study). Therapy with high-dose folate will lower plasma homocysteine levels but there is no evidence from clinical trials whether this decreases the risk of a new miscarriage.

### **Endocrinological causes**

The prevalence of hypothyroidism with or without underlying thyroid autoimmunity is significant among fertile women in fertile age. There is evidence that thyroid dysfunction and thyroid autoimmunity is associated with infertility and pregnancy loss both in the situation where the woman is euthyroid with thyroid antibodies and in a thyroid antibody negative woman with an elevated level of thyroid stimulating hormone (TSH) [15]. According to a recent meta-analysis of 38 studies, the presence of antibodies against thyroperoxidase (TPO-Ab) increased the risk of sporadic miscarriage with an odds ratio of 3.73 (95% CI 1.8 to 7.6) as well as RM (OR 2.3, 95% CI 1.5 to 3.5) [16]. In a large prospective study including pregnant thyroid antibody negative women, a TSH level within the normal range but higher than 2.5 mIU/L in the first trimester, nearly doubled the risk of a miscarriage [17]. However, the true significance of thyroid dysfunction and the value of its correction in improving outcomes in RM remains unclear.

Polycystic ovarian syndrome (PCOS) is a common endocrine disorder of reproductive-age women. PCOS may be associated with ovulatory disorder and miscarriage when

fertility is desired. Using strict criteria the prevalence of PCOS among women with RM is estimated to be 8.3% to 10% [18]. The mechanisms behind an increased miscarriage risk in women with PCOS remains partly unclear. The current view is that the main cause may be the associated obesity, which is dealt with in the section describing lifestyle factors.

### **Sperm DNA fragmentation**

Sperm DNA integrity is essential to reproduction, and measurement of sperm DNA fragmentation (SDF) was therefore first introduced as an additional tool in predicting male infertility. Indeed there is a correlation between low semen quality and high SDF levels, but at present much controversy exists with regard to cut-off levels, which assay to use, and the clinical relevance of the tests in assisted reproductive technologies [63].

In contrast, there is a documented link between DNA damage in sperm and miscarriage. A recent meta-analysis including 16 studies found a highly significant increase in miscarriage rate in couples where the male partner had elevated levels of sperm DNA damage compared to those where the male partner had low levels of sperm DNA damage (risk ratio = 2.16 (1.54, 3.03,  $P < 0.00001$ ) [19]. Due to variation in study characteristics, the authors have subgrouped the included studies according to whether raw or prepared semen was analyzed, and according to which type of assay was used to determine sperm DNA damage. A consistent and significant association with miscarriage was found regardless of which semen preparation was used while the strongest association as regards assays was found in a test quantifying sperm DNA damage directly by incorporating a labeled enzyme into single and double-stranded DNA breaks.

In a study comparing fertile sperm donors with couples who have unexplained RM, an assay was used that both measured DNA damage directly and also distinguished between single-stranded and double-stranded DNA damage. The study showed that 85% of the RM couples had a profile with high values of double-stranded DNA damage compared to only 33% among fertile sperm donors, suggesting a specific paternal explanation in these otherwise unexplained cases [20].

In the future, assays detecting sperm DNA damage may be introduced into the evaluation of couples who experience RM, and in an infertility setting the development of methods that select sperm without DNA damage may be helpful in reducing the risk of miscarriage.

### **Failure of embryo selection**

Recent *in vitro* studies of embryo-decidual interactions have demonstrated that decidualized stromal cells act as a biosensor for embryonic derived signals and appear capable of 'selecting' embryos for implantation on the



basis of their quality. The first study to demonstrate the biosensor function of decidualized endometrial stromal cells (ESC) showed that coculture with an arresting human embryo elicited a reduction in the production of key cytokine regulators of implantation including interleukin (IL)-1 $\beta$ , heparin-binding epidermal growth factor-like growth factor (HB-EGF), IL-6, and IL-10 [21]. These findings provided the first experimental evidence to support the hypothesis initially put forward by Quenby *et al.* that some women with RM may be allowing embryos of poor viability to implant inappropriately [22]. In other words, women who experience RM may not be rejecting healthy embryos, but rather permitting embryos of low viability to implant long enough to present as a clinical pregnancy before rather than being lost as a pre-clinical biochemical pregnancy.

The hypothesis that endometrial selectivity to embryo quality may be disrupted in women with RM has found support from a number of other studies. Women with RM have been shown to express lower levels of endometrial mucin 1, an antiadhesion molecule that contributes to the barrier function of the epithelium [23]. Moreover, ESCs of women with RM show an abnormal response to decidualization *in vitro*, manifest by attenuated prolactin (PRL) production and prolonged and enhanced prokineticin 1 expression [24]. It has been proposed that this may result in a prolonged 'window' of receptivity to implantation, but a reduction in the selective functions of the decidua [25].

If women with RM are less selective to embryos implanting, then it would be expected that they would report shorter intervals between pregnancies. This has indeed been demonstrated in a retrospective cohort study of 560 RM women, which showed a significantly greater proportion to have time-to-pregnancy intervals of 3 months or less compared with fertile control subjects [24].

Further experimental evidence supporting low endometrial selectivity or 'super receptivity' in women with RM has come from studies of stromal cell migration *in vitro*. Recently it has been shown that ESC migration occurs around the time of embryo implantation and may promote implantation by encapsulation of the conceptus [64,65]. In timelapse imaging studies covering a period of 48 h, ESC migration was clearly depicted at the site of embryo implantation. Moreover, the ESCs showed migration around the embryo suggesting an active role for ESCs in the implantation process [64].

Migration (scratch) assays have provided further evidence for altered embryo selectivity in women with RM. In a recent study, the directed migration of decidualized ESCs from normal fertile and RM women in the presence or absence of a high-quality or low-quality (chromosomally abnormal 3PN) embryo was observed [26]. The migration of ESCs from normal fertile women was totally inhibited in

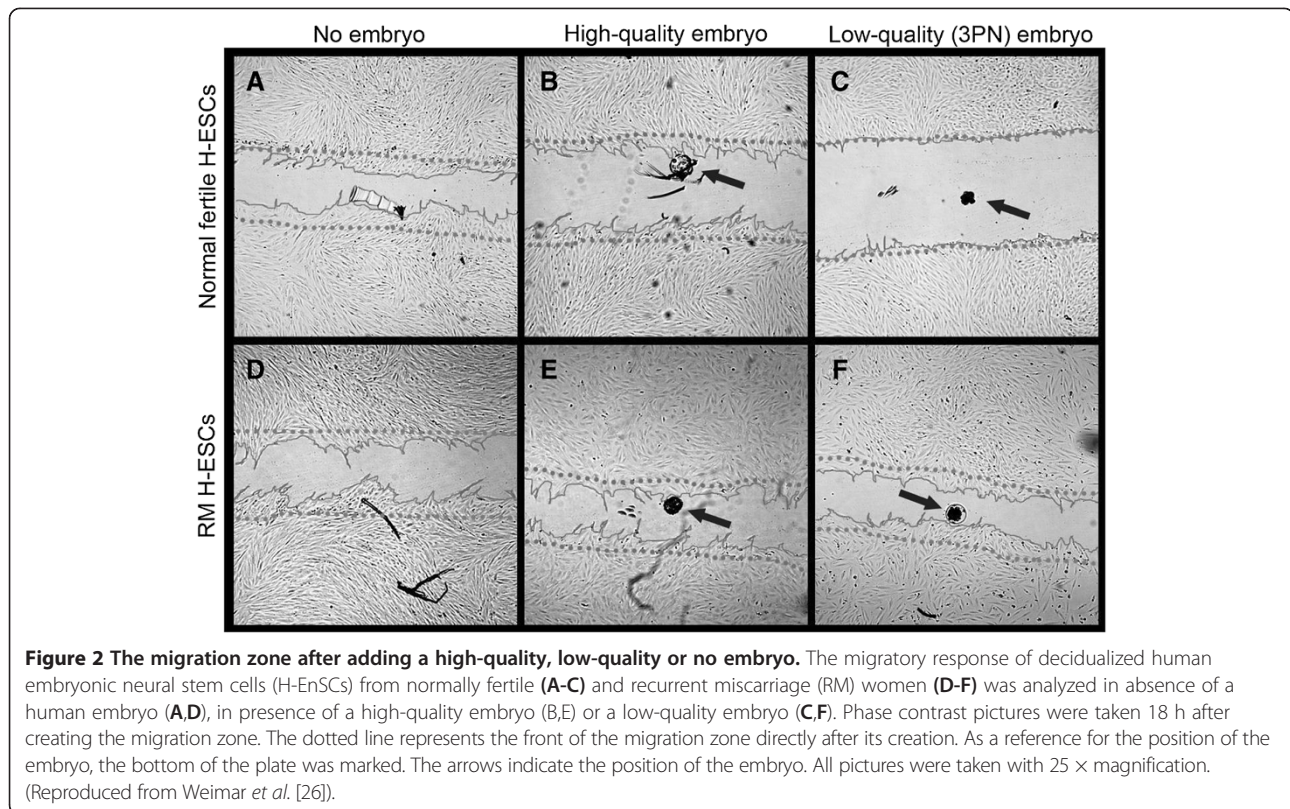
the presence of a low-quality embryo. However, the migration behavior of ESCs from women with RM was similar in the presence of both low-quality and high-quality embryos (Figure 2). In addition, in the presence of AC-1 M88 trophoblast cell-line-derived spheroids, the migration of ESCs from women with RM was enhanced compared to the normal fertile ESCs [26]. These observations suggest that ESCs from women with RM have an increased migratory potential in response to trophoblast signals and are more receptive (and thus less selective) for low-quality embryos than normally fertile women.

The clinical significance of these findings remains to be clarified, but failure of embryo selection may represent a single pathological pathway responsible for both euploidic and aneuploidic pregnancy losses. Brosens and Gellersen [65] have noted that given the high proportion of chromosomally abnormal preimplantation human embryos, this concept predicts that the likelihood of euploidic pregnancy failure increases with the number of miscarriages. This has indeed been shown to be the case [41].

This novel concept requires further elucidation and confirmation, but a growing body of evidence supports the notion of an active, selective decidual phenotype, which if disrupted may result in reproductive failure. Novel therapeutic options may thus be developed that can correct defects in selectivity, preventing inappropriate implantation of embryos of low viability and sparing women the severe stress caused by recurrent clinical miscarriage. Alternatively, *in vitro* fertilization and PGD may improve outcomes in this context as *in vitro* embryo selection would increase the chance of a viable embryo implanting. However, the efficacy of PGD in treating women with recurrent miscarriage due to translocations is unclear [54,66], and further studies are required.

#### **Uterine malformations**

An accepted cause of recurrent pregnancy loss is uterine malformations that may be acquired or congenital. The latter include didelphic, bicornuate, arcuate, and septate uteri. In a recent systematic review including 89,861 women, the prevalence of all congenital uterine malformations was 5.5% (95% CI 3.5 to 8.5) in an unselected population and 15.4% (95% CI 10.3 to 23) among women with  $\geq 3$  miscarriages [27]. In another review comprising 3,805 women the meta-analysis showed that a septate uterus increased the rate of a first trimester miscarriage significantly when compared with women with normal uteri (RR = 2.89; 95% CI 2.02 to 4.14) [28]. The role of septal resection is being debated. Non-controlled studies suggest a positive effect on pregnancy outcome but we still lack prospective randomized trials [67].



### hCG gene polymorphisms and epigenetic causes

hCG is a glycoprotein composed of two subunits,  $\alpha$  and  $\beta$ . Increasing amounts are secreted from the syncytiotrophoblast with increased gestation in the first trimester and bind to luteinizing hormone (LH)/hCG receptors on the corpus luteum preventing it from regression.

It is well known that early miscarriage is normally associated with low or suboptimally increasing hCG levels. The association between low hCG production and miscarriage can be interpreted in two ways: (1) the trophoblast growth may be delayed due to embryonal aneuploidy, immune or thrombophilic disturbances and low hCG production is a secondary phenomenon, or (2) the fetoplacental unit may secrete inadequate hCG due to a primary failure of the trophoblast to produce hCG, which will result in inadequate progesterone production and resulting embryonal death. Whereas the former condition in theory would not benefit from external hCG supplementation the latter condition may be treatable with external hCG or progesterone.

If the theory that some miscarriages are due to a primary failure of the trophoblast to produce hCG, the cause could be genetic. The  $\beta$  subunit of hCG is coded by four closely linked duplicate chorionic gonadotropin  $\beta$  (CGB) genes on chromosome 19, with CGB5 and CGB8 being the most active [68]. There is an association between levels of mRNA hCG- $\beta$  transcripts in trophoblast tissue and plasma

hCG levels and the levels of hCG- $\beta$  mRNA seem to be lower in tissue from RM than from normal first trimester pregnancies or ectopic pregnancies. Specific polymorphisms in the promoter region of the CGB5 gene that may enhance hCG- $\beta$  transcription have been found with lower prevalence in RM than in fertile couples [29] suggesting that some miscarriages in RM couples may be caused by polymorphism in the CGB genes. Couples with such polymorphisms may be those who would benefit from hCG supplementation, but this must be tested in prospective trials.

Recently, evidence has been presented suggesting that epigenetic disruptions may lie behind some instances of early pregnancy loss. During implantation embryos undergo demethylation and remethylation of DNA, which is crucial to their further development and health. In a study comparing methylation in embryos from medically terminated pregnancies with those from spontaneous losses, the villi derived from embryos lost in early pregnancy were found to express lower levels of DNA methyltransferase 1, an enzyme involved in maintaining methylation [69]. However, whether or not this is a causal rather than associated phenomenon with miscarriage remains to be elucidated. Numerous candidate genes associated with a small increase in the risk of early pregnancy loss have so far been described. The relative risk of miscarriage attributed to the carriage of most of these genetic polymorphisms is

modest, dependent on the clinical and genetic background of the patients and screening for the polymorphisms is therefore not clinically useful [30,41,70].

### Lifestyle factors

Women experiencing sporadic as well as RM often have many questions regarding lifestyle factors. Although pregnant women are advised to refrain from alcohol a national Danish birth cohort study including nearly 100,000 pregnant women showed that 45% had some level of alcohol intake [31]. Even small amounts of alcohol increased the risk of a miscarriage significantly and further, the results suggested that the risk increased in a dose-related manner. Thus, the adjusted hazard ratio for a first trimester miscarriage was 1.66 and 2.82 when having 2 to 3.5 drinks per week and >4 drinks per week, respectively. In contrast to alcohol consumption, coffee drinking in pregnancy is fully acceptable in many countries. Another Danish study has looked into the association between miscarriage and coffee intake [71]. Only in cases where mothers were drinking more than seven cups of coffee a day could the authors demonstrate an increased risk of miscarriage (adjusted hazard ratio 1.48 (95% CI 1.01 to 2.17)).

Smoking-related complications in late pregnancy are substantial and well documented. In contrast, data are sparse and conflicting when it comes to smoking and miscarriage. As such, a recent review reports an increased risk of pregnancy loss among smokers [72] whereas a large prospective study including 24,608 pregnancies could not demonstrate an association between smoking and miscarriage [73].

There are many pregnancy-related complications associated with obesity, including miscarriage. A meta-analysis from 2008 including primarily studies on infertile populations showed significantly increased miscarriage rates when women with a body mass index (BMI)  $\geq 25$  kg/m<sup>2</sup> were compared to women with a BMI  $< 25$  kg/m<sup>2</sup> [74]. This tendency has also been demonstrated in women with RM although it must be emphasized that a significantly increased risk of another miscarriage was demonstrated only in obese women; that is, BMI  $\geq 30$  kg/m<sup>2</sup> [32]. Interestingly, a logistic regression analysis showed that after advanced maternal age, increased BMI was the most important risk factor in predicting another miscarriage in women with RM.

A recent systematic review including 5 retrospective studies, 1 prospective study and a total cohort of nearly 30,000 women has investigated the relation between miscarriage rates and obesity (BMI  $\geq 28$  or 30 kg/m<sup>2</sup>) after spontaneous conception [33]. Indeed, they also found a significant association both as regards sporadic and RM implying an urgent need for prospective studies to assess the value of reducing BMI.

### Conclusions

Reproductive failure is a common complication in early pregnancy, with up to two-thirds of all fertilized oocytes not producing live births. Thus, a large number of conceptions either fail to implant or are categorized as biochemical pregnancies and clinical miscarriages. Although, the incidence of karyotypic abnormalities in the parents is low this high rate of early losses is most certainly connected to a high frequency of sporadic karyotypic abnormalities in the products of conception. In couples experiencing RM, however, a parental chromosomal anomaly is found ten times more frequently than in the background population and whether these couples should be offered PGD or await prenatal invasive diagnosis once a spontaneous pregnancy has been established is a matter under debate. Soon, sequencing of the entire fetal genome from free fetal DNA in the maternal circulation will be a standard procedure and will hopefully have the potential to increase our understanding of embryonic causes of both sporadic and RM.

Biomarkers associated with predisposition to thrombophilia or autoimmunity can be found with increased prevalence in women with RM and affect the prognosis negatively, but it is still unclear to what extent anticoagulation and immune modulation therapies can improve pregnancy outcome in these cases. Recent studies have highlighted the importance of genetically determined differences in capacity for hCG production and in markers of sperm DNA damage.

The emerging role of the endometrium as a biosensor of embryo quality, which may be less discerning in some women, also provides a novel mechanism underlying RM that merits further study. Sporadic miscarriage can be seen as representing nature's quality control system, preventing embryos with severe abnormalities in most cases from progressing beyond the peri-implantation period. Should this quality control be disrupted, such embryos may be allowed to establish implantation long enough to present as clinical pregnancy before failing, resulting in recurrent clinical miscarriage. Clearly, if an embryo is of high quality, then having a less selective endometrium will not have clinical consequences, and an ongoing pregnancy may ensue. Consistent with this, most women with RM will achieve an ongoing pregnancy if they persist in trying.

However, other concurrent medical conditions outlined in this article may prevent the ready establishment of ongoing pregnancy. Recent and ongoing research is clarifying the varying mechanisms underlying the very distressing condition of RM and offer new opportunities for developing effective interventions.

### Abbreviations

BMI: Body mass index; ESC: Endometrial stromal cells; ESHRE: European Society of Human Reproduction and Embryology; hCG: Human chorionic gonadotropin; PCOS: Polycystic ovarian syndrome; PGD: preimplantation genetic diagnosis; RM: Recurrent miscarriage.



### Competing interests

The authors declare they have no competing interests.

### Authors' contributions

NM, ECL and OBC made substantial contributions to conception and design. ECL, OBC, AMK, and NM contributed equally to the literature review, interpretation and writing of the manuscript. NM and OBC revised the manuscript critically. All authors read and approved the final manuscript.

### Authors' information

ECL and OBC run the largest recurrent miscarriage clinic in Denmark. OBC is a senior member of the ESHRE Special Interest Group in Early Pregnancy Loss. NM has longstanding clinical and research interest in early pregnancy loss. All authors have published numerous papers and book chapters in this field.

### Author details

<sup>1</sup>The Fertility Clinic, Juliane Marie Centre, Rigshospitalet, University of Copenhagen, Copenhagen, Denmark. <sup>2</sup>Department of Obstetrics and Gynaecology, Aalborg Hospital, Aalborg, Denmark. <sup>3</sup>Division of Human Development and Health, University of Southampton, Southampton, UK. <sup>4</sup>Obstetrics and Gynaecology, Academic Unit of Human Development and Health, University of Southampton, Southampton, UK. <sup>5</sup>Complete Fertility Centre Southampton, Princess Anne Hospital, Coxford Road, Southampton SO16 5YA, UK.

Received: 12 March 2013 Accepted: 29 May 2013

Published: 26 June 2013

### References

- Farquharson RG, Jauniaux E, Exalto N: **Updated and revised nomenclature for description of early pregnancy events.** *Hum Reprod* 2005, **20**:3008–3011.
- Jauniaux E, Farquharson RG, Christiansen OB, Exalto N: **Evidence-based guidelines for the investigation and medical treatment of recurrent miscarriage.** *Hum Reprod* 2006, **21**:2216–2222.
- Silver RM, Branch DW, Goldenberg R, Iams JD, Klebanoff MA: **Nomenclature for pregnancy outcomes: time for a change.** *Obstet Gynecol* 2011, **118**:1402–1408.
- Practice Committee of the American Society for Reproductive Medicine: **Evaluation and treatment of recurrent pregnancy loss: a committee opinion.** *Fertil Steril* 2012, **98**:1103–1111.
- Royal College of Obstetricians and Gynaecologists SAC: **Guideline No. 17. The investigation and treatment of couples with first and second trimester recurrent miscarriage.** London, UK: Royal College of Obstetricians and Gynaecologists; 2011:1–18.
- Holers VM, Girardi G, Mo L, Guthridge JM, Molina H, Pierangeli SS, Espinola R, Xiaowei LE, Mao D, Vialpando CG, Salmon JE: **Complement C3 activation is required for antiphospholipid antibody-induced fetal loss.** *J Exp Med* 2002, **195**:211–220.
- Oku K, Atsumi T, Bohgaki M, Amengual O, Kataoka H, Horita T, Yasuda S, Koike T: **Complement activation in patients with primary antiphospholipid syndrome.** *Ann Rheum Dis* 2009, **68**:1030–1035.
- King K, Smith S, Chapman M, Sacks G: **Detailed analysis of peripheral blood natural killer (NK) cells in women with recurrent miscarriage.** *Hum Reprod* 2010, **25**:52–58.
- Quenby S, Nik H, Innes B, Lash G, Turner M, Drury J, Bulmer J: **Uterine natural killer cells and angiogenesis in recurrent reproductive failure.** *Hum Reprod* 2009, **24**:45–54.
- Tang AW, Alfirevic Z, Quenby S: **Natural killer cells and pregnancy outcomes in women with recurrent miscarriage and infertility: a systematic review.** *Hum Reprod* 2011, **26**:1971–1980.
- Christiansen OB, Kolte AM, Dahl M, Larsen EC, Steffensen R, Nielsen HS, Hviid TV: **Maternal homozygosity for a 14 base pair insertion in exon 8 of the HLA-G gene and carriage of HLA class II alleles restricting HY immunity predispose to unexplained secondary recurrent miscarriage and low birth weight in children born to these patients.** *Hum Immunol* 2012, **73**:699–705.
- Robertson L, Wu O, Langhorne P, Twaddle S, Clark P, Lowe GD, Walker ID, Greaves M, Brenkel I, Regan L, Greer IA: **Thrombophilia in pregnancy: a systematic review.** *Br J Haematol* 2006, **132**:171–196.
- McNamee K, Dawood F, Farquharson R: **Recurrent miscarriage and thrombophilia: an update.** *Curr Opin Obstet Gynecol* 2012, **24**:229–234.
- Lassere M, Empson M: **Treatment of antiphospholipid syndrome in pregnancy - a systematic review of randomized therapeutic trials.** *Thromb Res* 2004, **114**:419–426.
- Twig G, Shina A, Amital H, Shoenfeld Y: **Pathogenesis of infertility and recurrent pregnancy loss in thyroid autoimmunity.** *J Autoimmun* 2012, **38**:J275–J281.
- van den Boogaard E, Vissenberg R, Land JA, van Wely M, van der Post JA, Goddijn M, Bisschop PH: **Significance of (sub)clinical thyroid dysfunction and thyroid autoimmunity before conception and in early pregnancy: a systematic review.** *Hum Reprod Update* 2011, **17**:605–619.
- Negro R, Schwartz A, Gismondi R, Tinelli A, Mangieri T, Stagnaro-Green A: **Increased pregnancy loss rate in thyroid antibody negative women with TSH levels between 2.5 and 5.0 in the first trimester of pregnancy.** *J Clin Endocrinol Metabol* 2010, **95**:E44–E48.
- Cocksedge KA, Saravelos SH, Metwally M, Li TC: **How common is polycystic ovary syndrome in recurrent miscarriage?** *Reprod Biomed Online* 2009, **19**:572–576.
- Robinson L, Gallos ID, Conner SJ, Rajkhowa M, Miller D, Lewis S, Kirkman-Brown J, Coomarasamy A: **The effect of sperm DNA fragmentation on miscarriage rates: a systematic review and meta-analysis.** *Hum Reprod* 2012, **27**:2908–2917.
- Ribas-Maynou J, Garcia-Peiro A, Fernandez-Encinas A, Amengual MJ, Prada E, Cortes P, Navarro J, Benet J: **Double stranded sperm DNA breaks, measured by Comet assay, are associated with unexplained recurrent miscarriage in couples without a female factor.** *PLoS One* 2012, **7**:e44679.
- Teklenburg G, Salker M, Molokhia M, Lavery S, Trew G, Aojanepong T, Mardon HJ, Lokugamage AU, Rai R, Landles C, Roelen BA, Quenby S, Kuijk EW, Kavelaars A, Heijnen CJ, Regan L, Brosens JJ, Macklon NS: **Natural selection of human embryos: decidualizing endometrial stromal cells serve as sensors of embryo quality upon implantation.** *PLoS One* 2010, **5**:e10258.
- Quenby S, Vince G, Farquharson R, Aplin J: **Recurrent miscarriage: a defect in nature's quality control?** *Hum Reprod* 2002, **17**:1959–1963.
- Aplin JD, Hey NA, Li TC: **MUC1 as a cell surface and secretory component of endometrial epithelium: reduced levels in recurrent miscarriage.** *Am J Reprod Immunol* 1996, **35**:261–266.
- Salker M, Teklenburg G, Molokhia M, Lavery S, Trew G, Aojanepong T, Mardon HJ, Lokugamage AU, Rai R, Landles C, Roelen BA, Quenby S, Kuijk EW, Kavelaars A, Heijnen CJ, Regan L, Macklon NS, Brosens JJ: **Natural selection of human embryos: impaired decidualization of endometrium disables embryo-maternal interactions and causes recurrent pregnancy loss.** *PLoS One* 2010, **5**:e10287.
- Teklenburg G, Salker M, Heijnen C, Macklon NS, Brosens JJ: **The molecular basis of recurrent pregnancy loss: impaired natural embryo selection.** *Mol Hum Reprod* 2010, **16**:886–895.
- Weimar CH, Kavelaars A, Brosens JJ, Gellersen B, de Vreeden-Elbertse JM, Heijnen CJ, Macklon NS: **Endometrial stromal cells of women with recurrent miscarriage fail to discriminate between high- and low-quality human embryos.** *PLoS One* 2012, **7**:e41424.
- Chan YY, Jayaprakasan K, Zamora J, Thornton JG, Raine-Fenning N, Coomarasamy A: **The prevalence of congenital uterine anomalies in unselected and high-risk populations: a systematic review.** *Hum Reprod Update* 2011, **17**:761–771.
- Chan YY, Jayaprakasan K, Tan A, Thornton JG, Coomarasamy A, Raine-Fenning NJ: **Reproductive outcomes in women with congenital uterine anomalies: a systematic review.** *Ultrasound Obstet Gynecol* 2011, **38**:371–382.
- Rull KCO, Nagirnaja L, Steffensen R, Margus T, Laan M: **A modest, but significant effect of CGB5 gene promoter polymorphisms in modulating the risk of recurrent miscarriage.** *Fertil Steril* 2013, **99**:1930–1936.
- Daher S, Mattar R, Gueuvoghlian-Silva BY, Torloni MR: **Genetic polymorphisms and recurrent spontaneous abortions: an overview of current knowledge.** *Am J Reprod Immunol* 2012, **67**:341–347.
- Andersen AM, Andersen PK, Olsen J, Gronbaek M, Strandberg-Larsen K: **Moderate alcohol intake during pregnancy and risk of fetal death.** *Int J Epidemiol* 2012, **41**:405–413.
- Metwally M, Saravelos SH, Ledger WL, Li TC: **Body mass index and risk of miscarriage in women with recurrent miscarriage.** *Fertil Steril* 2010, **94**:290–295.
- Boots C, Stephenson MD: **Does obesity increase the risk of miscarriage in spontaneous conception: a systematic review.** *Semin Reprod Med* 2011, **29**:507–513.

34. Zinaman MJ, Clegg ED, Brown CC, O'Connor J, Selevan SG: **Estimates of human fertility and pregnancy loss.** *Fertil Steril* 1996, **65**:503–509.
35. Wilcox AJ, Weinberg CR, O'Connor JF, Baird DD, Schlatterer JP, Canfield RE, Armstrong EG, Nilusa BC: **Incidence of early loss of pregnancy.** *N Engl J Med* 1988, **319**:189–194.
36. Wang X, Chen C, Wang L, Chen D, Guang W, French J: **Conception, early pregnancy loss, and time to clinical pregnancy: a population-based prospective study.** *Fertil Steril* 2003, **79**:577–584.
37. Macklon NS, Geraedts JP, Fauser BC: **Conception to ongoing pregnancy: the 'black box' of early pregnancy loss.** *Hum Reprod Update* 2002, **8**:333–343.
38. Nybo Andersen AM, Wohlfahrt J, Christens P, Olsen J, Melbye M: **Maternal age and fetal loss: population based register linkage study.** *BMJ* 2000, **320**:1708–1712.
39. Ugwumadu A, Manyonda I, Reid F, Hay P: **Effect of early oral clindamycin on late miscarriage and preterm delivery in asymptomatic women with abnormal vaginal flora and bacterial vaginosis: a randomised controlled trial.** *Lancet* 2003, **361**:983–988.
40. Carp HJA: **Epidemiology of recurrent pregnancy loss.** In *Recurrent Pregnancy Loss*. London, UK: Informa Healthcare; 2007.
41. Christiansen OB, Steffensen R, Nielsen HS, Varming K: **Multifactorial etiology of recurrent miscarriage and its scientific and clinical implications.** *Gynecol Obstet Invest* 2008, **66**:257–267.
42. Philipp T, Philipp K, Reiner A, Beer F, Kalousek DK: **Embryoscopic and cytogenetic analysis of 233 missed abortions: factors involved in the pathogenesis of developmental defects of early failed pregnancies.** *Hum Reprod* 2003, **18**:1724–1732.
43. Vanneste E, Voet T, Le Caignec C, Ampe M, Konings P, Melotte C, Debrock S, Amyere M, Vikkula M, Schuit F, Frys JP, Verbeke G, D'Hooghe T, Moreau Y, Vermeesch JR: **Chromosome instability is common in human cleavage-stage embryos.** *Nat Med* 2009, **15**:577–583.
44. Kurahashi H, Tsutsumi M, Nishiyama S, Kogo H, Inagaki H, Ohye T: **Molecular basis of maternal age-related increase in oocyte aneuploidy.** *Congenit Anom* 2012, **52**:8–15.
45. Morris JK, Wald NJ, Watt HC: **Fetal loss in Down syndrome pregnancies.** *Prenat Diagn* 1999, **19**:142–145.
46. Ogasawara M, Aoki K, Okada S, Suzumori K: **Embryonic karyotype of abortuses in relation to the number of previous miscarriages.** *Fertil Steril* 2000, **73**:300–304.
47. Chiu RW, Lo YM: **Clinical applications of maternal plasma fetal DNA analysis: translating the fruits of 15 years of research.** *Clin Chem Lab Med* 2013, **1**:197–204.
48. Kitzman JO, Snyder MW, Ventura M, Lewis AP, Qiu R, Simmons LE, Gammill HS, Rubens CE, Santillan DA, Murray JC, Tabor HK, Bamshad MJ, Eichler EE, Shendure J: **Noninvasive whole-genome sequencing of a human fetus.** *Sci Transl Med* 2012, **4**:137–176.
49. Norton ME, Brar H, Weiss J, Karimi A, Laurent LC, Caughey AB, Rodriguez MH, Williams J 3rd, Mitchell ME, Adair CD, Lee H, Jacobsson B, Tomlinson MW, Oepkes D, Hollemon D, Sparks AB, Oliphant A, Song K: **Non-Invasive Chromosomal Evaluation (NICE) Study: results of a multicenter prospective cohort study for detection of fetal trisomy 21 and trisomy 18.** *Am J Obstet Gynecol* 2012, **207**:137.
50. Dan S, Wang W, Ren J, Li Y, Hu H, Xu Z, Lau TK, Xie J, Zhao W, Huang H, Sun L, Zhang X, Liao S, Qiang R, Cao J, Zhang Q, Zhou Y, Zhu H, Zhong M, Guo Y, Lin L, Gao Z, Yao H, Zhang H, Zhao L, Jiang F, Chen F, Jiang H, Li S, Wang J, et al: **Clinical application of massively parallel sequencing-based prenatal noninvasive fetal trisomy test for trisomies 21 and 18 in 11,105 pregnancies with mixed risk factors.** *Prenat Diagn* 2012, **32**:1225–1232.
51. Branch DW, Gibson M, Silver RM: **Clinical practice. Recurrent miscarriage.** *N Engl J Med* 2010, **363**:1740–1747.
52. Franssen MT, Korevaar JC, van der Veen F, Leschot NJ, Bossuyt PM, Goddijn M: **Reproductive outcome after chromosome analysis in couples with two or more miscarriages: index [corrected]-control study.** *BMJ* 2006, **332**:759–763.
53. Franssen MT, Korevaar JC, Leschot NJ, Bossuyt PM, Knegt AC, Gerssen-Schoolt KB, Wouters CH, Hansson KB, Hochstenbach R, Madan K, van der Veen F, Goddijn M: **Selective chromosome analysis in couples with two or more miscarriages: case-control study.** *BMJ* 2005, **331**:137–141.
54. Franssen MT, Musters AM, van der Veen F, Repping S, Leschot NJ, Bossuyt PM, Goddijn M, Korevaar JC: **Reproductive outcome after PGD in couples with recurrent miscarriage carrying a structural chromosome abnormality: a systematic review.** *Hum Reprod Update* 2011, **17**:467–475.
55. Lalioti MD: **Can preimplantation genetic diagnosis overcome recurrent pregnancy failure?** *Curr Opin Obstet Gynecol* 2008, **20**:199–204.
56. Calleja-Agius J, Jauniaux E, Pizzey AR, Muttukrishna S: **Investigation of systemic inflammatory response in first trimester pregnancy failure.** *Hum Reprod* 2012, **27**:349–357.
57. Nielsen HS, Steffensen R, Varming K, Van Halteren AG, Spierings E, Ryder LP, Goulmy E, Christiansen OB: **Association of HLA class II alleles with pregnancy outcome in patients with recurrent miscarriage subsequent to a firstborn boy.** *Hum Mol Genet* 2009, **18**:1684–1691.
58. Hiby SE, Regan L, Lo W, Farrell L, Carrington M, Moffett A: **Association of maternal killer-cell immunoglobulin-like receptors and parental HLA-C genotypes with recurrent miscarriage.** *Hum Reprod* 2008, **23**:972–976.
59. Kruse C, Rosgaard A, Steffensen R, Varming K, Jensenius JC, Christiansen OB: **Low serum level of mannan-binding lectin is a determinant for pregnancy outcome in women with recurrent spontaneous abortion.** *Am J Obstet Gynecol* 2002, **187**:1313–1320.
60. Porter TF, LaCoursiere Y, Scott JR: **Immunotherapy for recurrent miscarriage.** *Cochrane Database Syst Rev* 2006, **2**, CD000112.
61. Ata B, Tan SL, Shehata F, Holzer H, Buckett W: **A systematic review of intravenous immunoglobulin for treatment of unexplained recurrent miscarriage.** *Fertil Steril* 2011, **95**:1080–1085.
62. Girardi G, Redecha P, Salmon JE: **Heparin prevents antiphospholipid antibody-induced fetal loss by inhibiting complement activation.** *Nat Med* 2004, **10**:1222–1226.
63. Beshay VE, Bukulmez O: **Sperm DNA damage: how relevant is it clinically?** *Curr Opin Obstet Gynecol* 2012, **24**:172–179.
64. Grewal S, Carver JG, Ridley AJ, Mardon HJ: **Implantation of the human embryo requires Rac1-dependent endometrial stromal cell migration.** *Proc Natl Acad Sci USA* 2008, **105**:16189–16194.
65. Brosens JJ, Gellersen B: **Something new about early pregnancy: decidual biosensing and natural embryo selection.** *Ultrasound Obstet Gynecol* 2010, **36**:1–5.
66. Fischer J, Colls P, Escudero T, Munne S: **Preimplantation genetic diagnosis (PGD) improves pregnancy outcome for translocation carriers with a history of recurrent losses.** *Fertil Steril* 2010, **94**:283–289.
67. Kowalik CR, Goddijn M, Emanuel MH, Bongers MY, Spinder T, de Kruijff JH, Mol BW, Heineman MJ: **Metroplasty versus expectant management for women with recurrent miscarriage and a septate uterus.** *Cochrane Database Syst Rev* 2011, **6**, CD008576.
68. Rull K, Laan M: **Expression of  $\beta$ -subunit of HCG genes during normal and failed pregnancy.** *Hum Reprod* 2005, **20**:3360–3368.
69. Yin LJ, Zhang Y, Lv PP, He WH, Wu YT, Liu AX, Ding GL, Dong MY, Qu F, Xu CM, Zhu XM, Huang HF: **Insufficient maintenance DNA methylation is associated with abnormal embryonic development.** *BMC Med* 2012, **10**:26.
70. Chin JR, Heuser CC, Eller AG, Branch DW, Nelson LT, Silver RM: **Leptin and leptin receptor polymorphisms and recurrent pregnancy loss.** *J Perinatol*. In press.
71. Bech BH, Nohr EA, Vaeth M, Henriksen TB, Olsen J: **Coffee and fetal death: a cohort study with prospective data.** *Am J Epidemiol* 2005, **162**:983–990.
72. Saravelos SH, Regan L: **The importance of preconception counseling and early pregnancy monitoring.** *Semin Reprod Med* 2011, **29**:557–568.
73. Wisborg K, Kesmodel U, Henriksen TB, Hedegaard M, Secher NJ: **A prospective study of maternal smoking and spontaneous abortion.** *Acta Obstet Gynecol Scand* 2003, **82**:936–941.
74. Metwally M, Ong KJ, Ledger WL, Li TC: **Does high body mass index increase the risk of miscarriage after spontaneous and assisted conception? A meta-analysis of the evidence.** *Fertil Steril* 2008, **90**:714–726.

doi:10.1186/1741-7015-11-154

Cite this article as: Larsen et al.: New insights into mechanisms behind miscarriage. *BMC Medicine* 2013 **11**:154.