

CORRECTION

Open Access



Correction: Socioeconomic position and prognosis in premenopausal breast cancer: a population-based cohort study in Denmark

Cathrine Fønnesbech Hjorth^{1*}, Per Damkier^{2,3}, Bent Ejlersen^{4,5}, Timothy Lash^{1,6}, Henrik Toft Sørensen¹ and Deirdre Cronin-Fenton¹

Correction: BMC Med 19, 235 (2021)
<https://doi.org/10.1186/s12916-021-02108-z>

In our original article [1] the multivariate models outlining the association of cohabitation with breast cancer recurrence and mortality were over-adjusted, as models also included marital status, which is used to define cohabitation. This has now been corrected.

- 1 In Fig. 2, the 5 years and overall adjusted IRRs and CIs of recurrence were incorrect and stated as 0.89 (0.61–1.29) and 0.85 (0.60–1.19) in the published manuscript, respectively. The corrected estimates are 1.21 (0.90–1.63) and 1.09 (0.83–1.43).

- 2 In Fig. 3, the 5 years and overall adjusted IRRs and CIs of mortality were incorrectly stated as 1.03 (0.67–1.60) and 1.02 (0.70–1.47), respectively, instead of 1.55 (1.10–2.20) and 1.41 (1.05–1.88).

The correct figures are given ahead.
We regret the error.

Published online: 17 August 2023

Reference

1. Hjorth CF, Damkier P, Ejlersen B, et al. Socioeconomic position and prognosis in premenopausal breast cancer: a population-based cohort study in Denmark. *BMC Med.* 2021;19:235. <https://doi.org/10.1186/s12916-021-02108-z>.

The original article can be found online at <https://doi.org/10.1186/s12916-021-02108-z>.

*Correspondence:

Cathrine Fønnesbech Hjorth
cfh@clin.au.dk

¹ Department of Clinical Epidemiology, Department of Clinical Medicine, Aarhus University and Aarhus University Hospital, Olof Palmes Allé 43-45, 8200 Aarhus, N, Denmark

² Department of Clinical Biochemistry and Pharmacology, Odense University Hospital, J.B. Winsløvs Vej 4, 5000 Odense, Denmark

³ Department of Clinical Research, University of Southern Denmark, Winsløwparken 19, 5000 Odense, Denmark

⁴ Danish Breast Cancer Group, Blegdamsvej 9, 2100 Copenhagen, Denmark

⁵ Department of Oncology, University of Copenhagen, Blegdamsvej 9, Rigshospitalet, 2100 Copenhagen, Denmark

⁶ Department of Epidemiology, Rollins School of Public Health, Emory University, 1518 Clifton Rd, Atlanta, GA 30322, USA



© The Author(s). 2023. **Open Access** This article is licensed under a Creative Commons Attribution 4.0 International License, which permits use, sharing, adaptation, distribution and reproduction in any medium or format, as long as you give appropriate credit to the original author(s) and the source, provide a link to the Creative Commons licence, and indicate if changes were made. The images or other third party material in this article are included in the article's Creative Commons licence, unless indicated otherwise in a credit line to the material. If material is not included in the article's Creative Commons licence and your intended use is not permitted by statutory regulation or exceeds the permitted use, you will need to obtain permission directly from the copyright holder. To view a copy of this licence, visit <http://creativecommons.org/licenses/by/4.0/>. The Creative Commons Public Domain Dedication waiver (<http://creativecommons.org/publicdomain/zero/1.0/>) applies to the data made available in this article, unless otherwise stated in a credit line to the data.

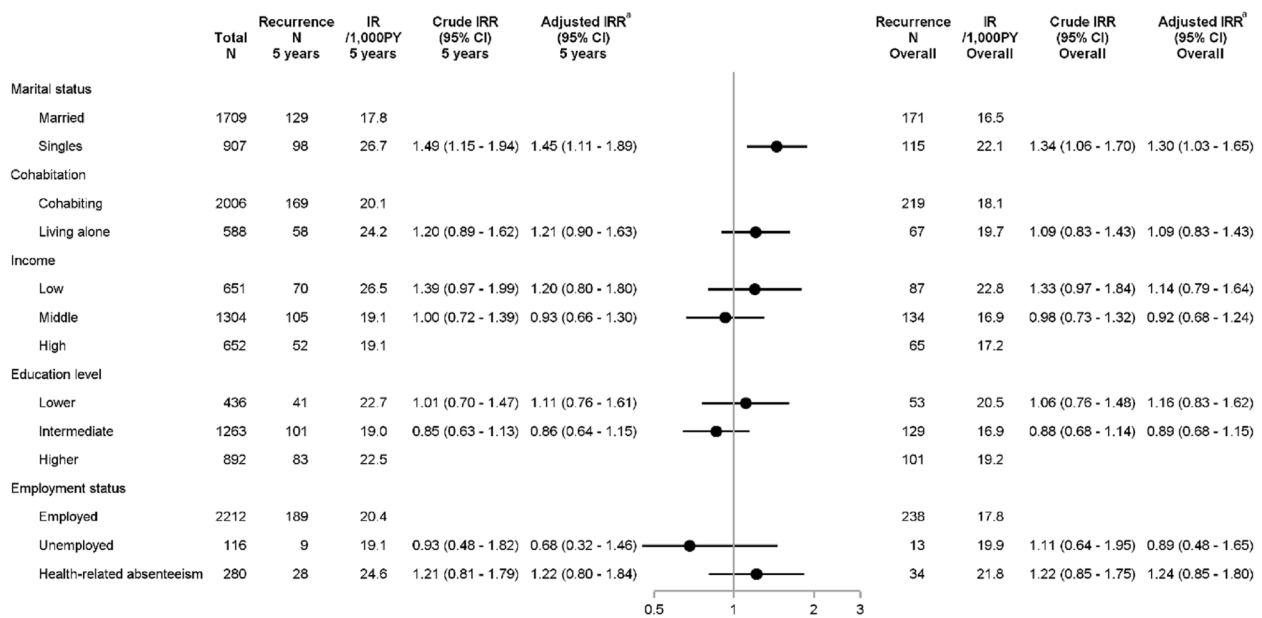


Fig. 2 Incidence rates and incidence rate ratios of breast cancer recurrence by socioeconomic position. Plots illustrate 5-year adjusted IRRs and error bars 95% CIs.^a Marital status was adjusted for age; cohabitation for age; income for age, comorbidities, marital status, cohabitation, education, and employment; education for age; employment for age, comorbidities, and education. Abbreviations: CI, Confidence Interval; IR, Incidence Rate; IRR, Incidence Rate ratio; N, Numbers; PY, Person-years

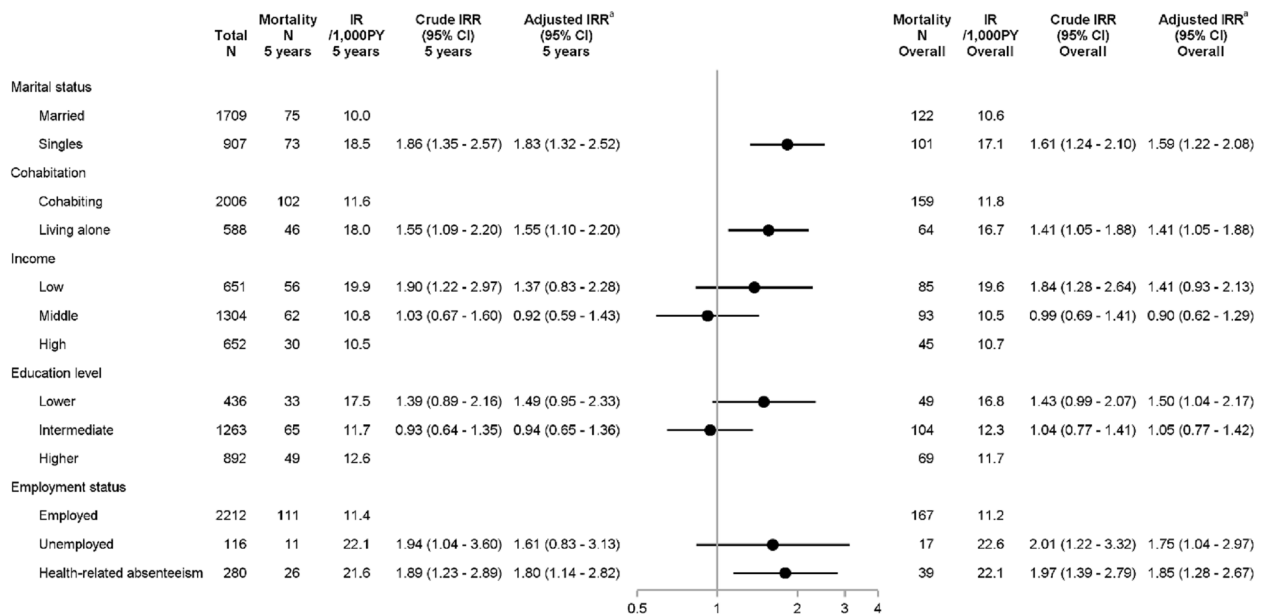


Fig. 3 Incidence rates and incidence rate ratios of mortality by socioeconomic position. Plots illustrate 5-year adjusted IRRs and error bars 95% CIs.^a Marital status was adjusted for age; cohabitation for age; income for age, comorbidities, marital status, cohabitation, education, and employment; education for age; employment for age, comorbidities, and education. Abbreviations: CI, Confidence Interval; IR, Incidence Rate; IRR, Incidence Rate ratio; N, Numbers; PY, Person-years